

The Development of  
**Modeling, Simulation** and **Visualization**  
**Services** for the Earth Sciences  
in the National Supercomputing Center  
of Korea



■ **Min-Su Joh, Joon-Eun Ahn, Oh-kyoung Kwon**

Supercomputing Service Center  
National Institute of Supercomputing & Networking  
Korea Institute of Science and Technology Information



# Presentation Outline



- Government supported Research Institute
- Personnel :  
About 350
- Annual revenue :  
USD 120M
- Location :  
Daejeon



I

## Infrastructure

Supercomputer, Network

II

## User Support

Users, Requirements, Services

III

## Achievements

Modeling, Simulation, Visualization

IV

## Future Plans

Decision Making Support System



# I.1 Supercomputer (1/2)

2016 ?  
30PF ?

1988

1993

2001

2008

1st

2nd

3rd

4th

2 GF

16 GF

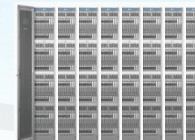
80 GF

240 GF

2.85 TF

24.1 TF

297.3 TF



Cray-2S

Cray C90

NEC SX-5

NEC SX-6

IBM e1350

Sun C48 cluster

Sun C48 cluster

1<sup>st</sup> SC System  
in Korea  
until 1993

2<sup>nd</sup> SC System  
in Korea  
until 2001

3<sup>rd</sup> SC System  
in Korea  
until 2008

3<sup>rd</sup> SC System  
in Korea  
until 2008

4<sup>th</sup> SC System

4<sup>th</sup> SC System

1988

1993

1997

2000

2001

2002

2003

2008

2009

2GF

16GF

131GF

242GF

786GF

5.2 TF

8.6 TF

29.9 TF

358.0 TF

Cray T3E

HP GS320  
HPC160/320

PC Cluster  
128node

IBM p690  
3<sup>rd</sup> SC system  
in Korea  
until 2009

IBM p690+  
3<sup>rd</sup> SC System  
in Korea  
until 2008

IBM p595  
4<sup>th</sup> SC System

IBM p595  
4<sup>th</sup> SC System



115 GF

111 GF

435 GF

4.36 TF

3.7 TF

5.9 TF

30.7 TF



# I.1 Supercomputer (2/2)

KISTI Machine Room

Total 358.0 TF



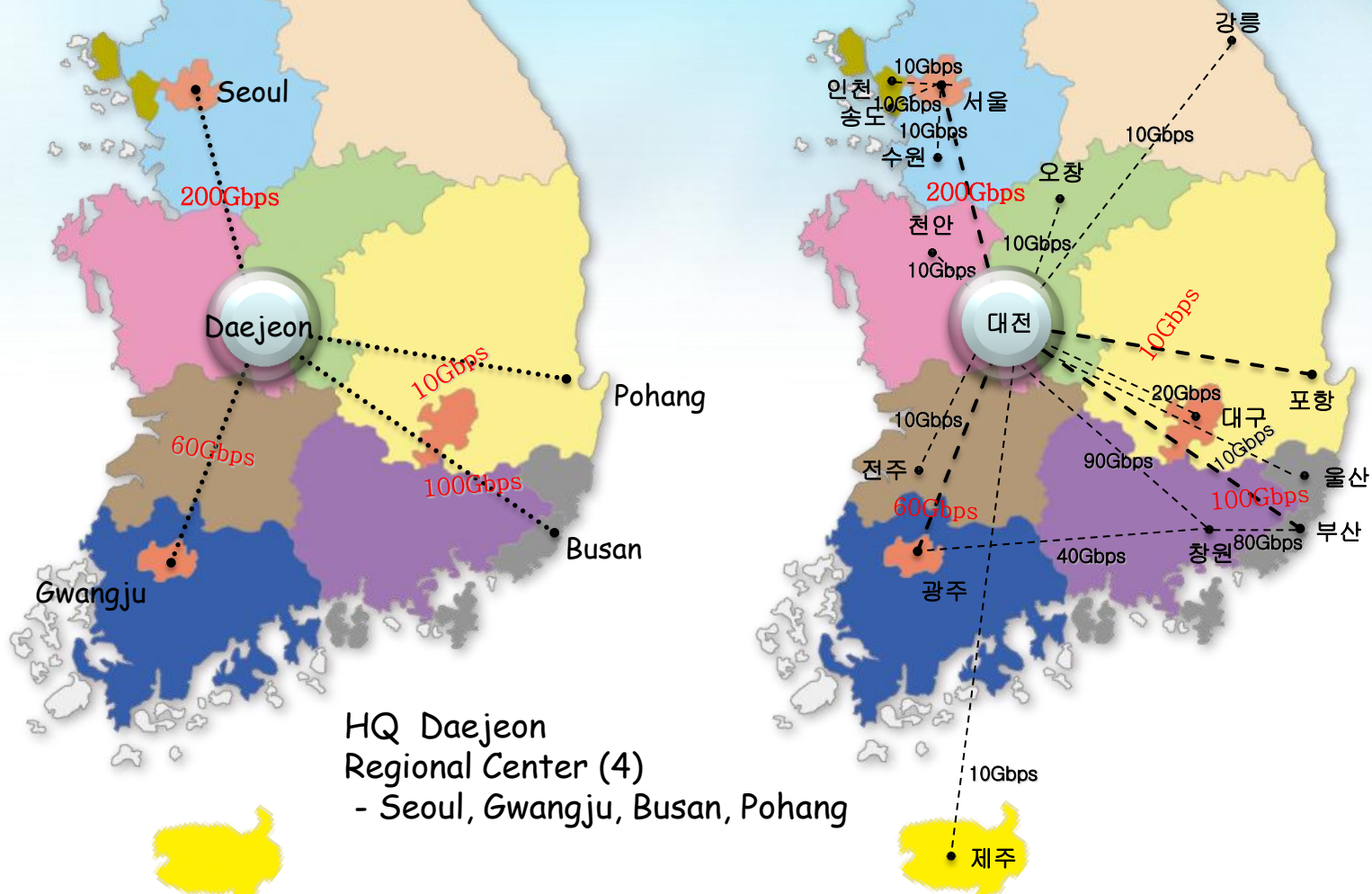
| Nick Name             | GAIA 1             | GAIA 2            | TACHYON 1         | TACHYON 2               |
|-----------------------|--------------------|-------------------|-------------------|-------------------------|
| Processor Type        | POWER5+<br>2.3 GHz | POWER6<br>5.0 GHz | AMD B.<br>2.0 GHz | Intel X5570<br>2.93 GHz |
| No. of Node           | 10                 | 24                | 192               | 3200                    |
| No. of Core           | 640                | 1,536             | 3,008 (3,072)     | 25,408 (25,600)         |
| Peak Performance (TF) | 5.9                | 30.7              | 24.1 (24.6)       | 297.3 (299.5)           |
| Disk Storage (TB)     | 63                 | 273               | 203               | 1203                    |
| Official Service Open | Jan., 2008         | Oct., 2009        | Sep., 2008        | Jan., 2011              |
| Operation Period      | 6 year             | 4 year            | 5 year            | 3 year                  |
| Service Close (plan)  | June, 2014         | Dec., 2014        | Dec., 2015        | ?                       |





# I.2 Network (1/2)

**KREONET** Korea Research Environment Open **NET**work  
**National Research Network for R&D community in Korea**  
**National-wide Optical Gigabit Network Facility (10~200Gbps)**

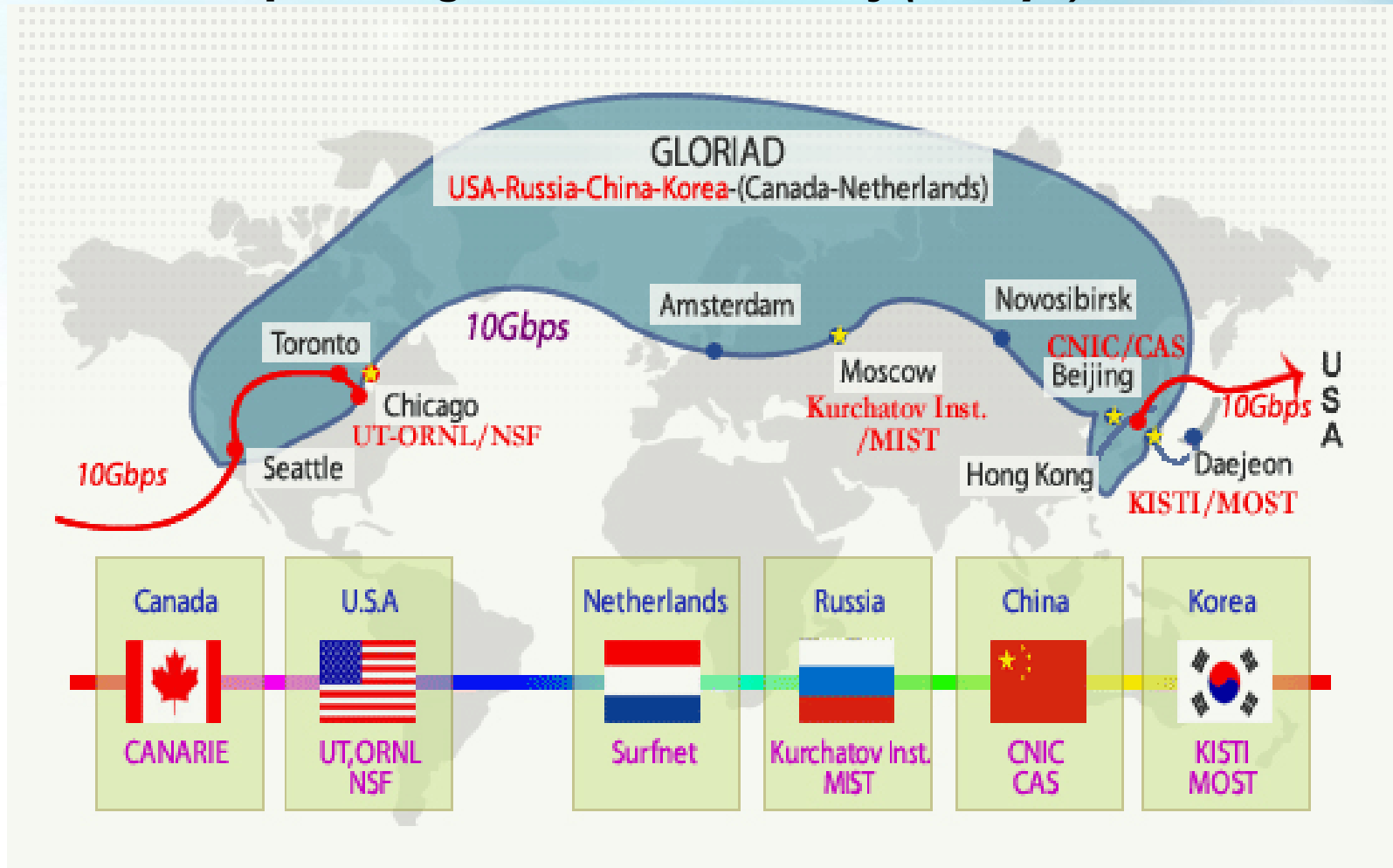


HQ Daejeon  
 Regional Center (4)  
 - Seoul, Gwangju, Busan, Pohang



# I.2 Network (2/2)

**GLORIAD** **G**lobal **R**ing Network for Advanced **A**pplication **D**evelopment  
**Global Research Network for R&D community in the world**  
**World-wide Optical Gigabit Network Facility (10Gbps)**





# II.1 Major Users

## Operation

## Research

### ATMOS.



**대한민국공군**  
REPUBLIC OF KOREA AIR FORCE

**Dedicated nodes** (gaia1- 2, gaia2 -1)



**한국수자원공사**  
Korea Water Resources Corporation

**Dedicated nodes** (tachyon2 - 200)



Korea Polar Research Institute

### A / O



**기상청** Korea Meteorological Administration

KISTI is a KMA's Backup Site.




**nimr** 국립기상연구소

**Dedicated nodes** (tachyon2 - 250)



**Dedicated nodes** (tachyon2 - 100)

### Ocean



**국립해양조사원**  
National Oceanographic Research Institute

**Dedicated nodes** (tachyon2 - 200)



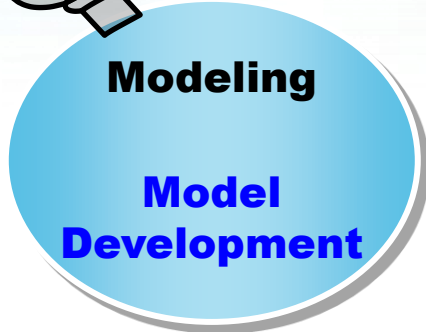

**KIOST**  
KOREA INSTITUTE OF OCEAN SCIENCE & TECHNOLOGY



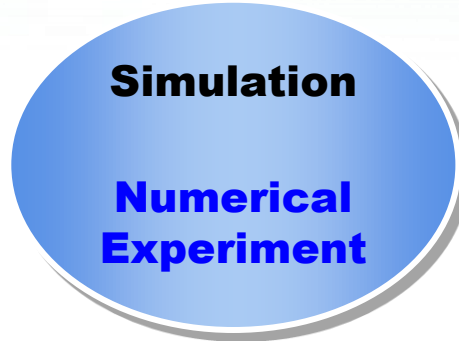
## II.2 Requirements

**Providing**

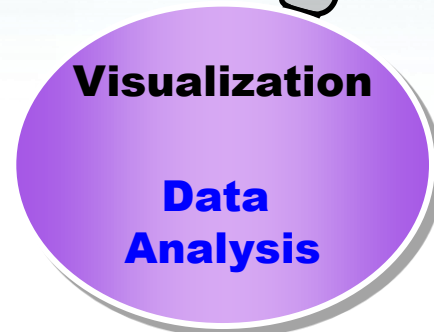
# Scientific & Technological Support for



Huge Computing Resources



Easy Available Environment



Realistic Visual Representation





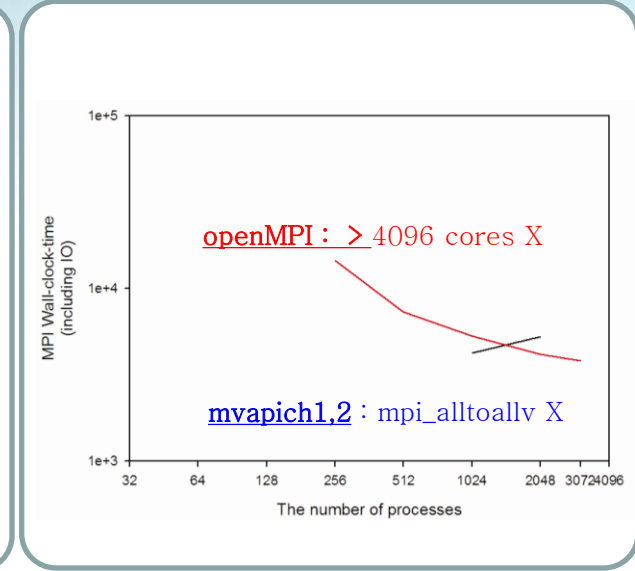
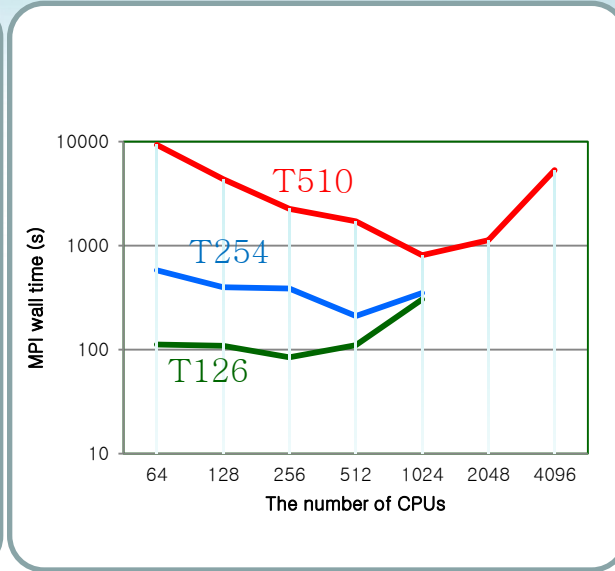
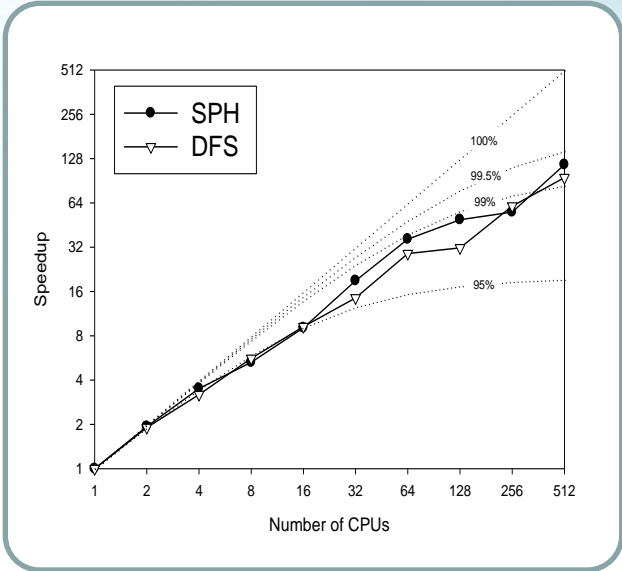
# II.3 Services (1/3)

## Modeling

$$speed\ up(n) = \frac{\text{single process run time}}{\text{multiple processes (n) run time}}$$

Supporting  
Code  
Optimization

Providing  
& Computing  
Resources



- Computing Resources ( > 2000 cores ~ 24 TF )
- Parallel library & Optimization



- Model Development
- Model Operation



# II.3 Services (2/3)

## Simulation



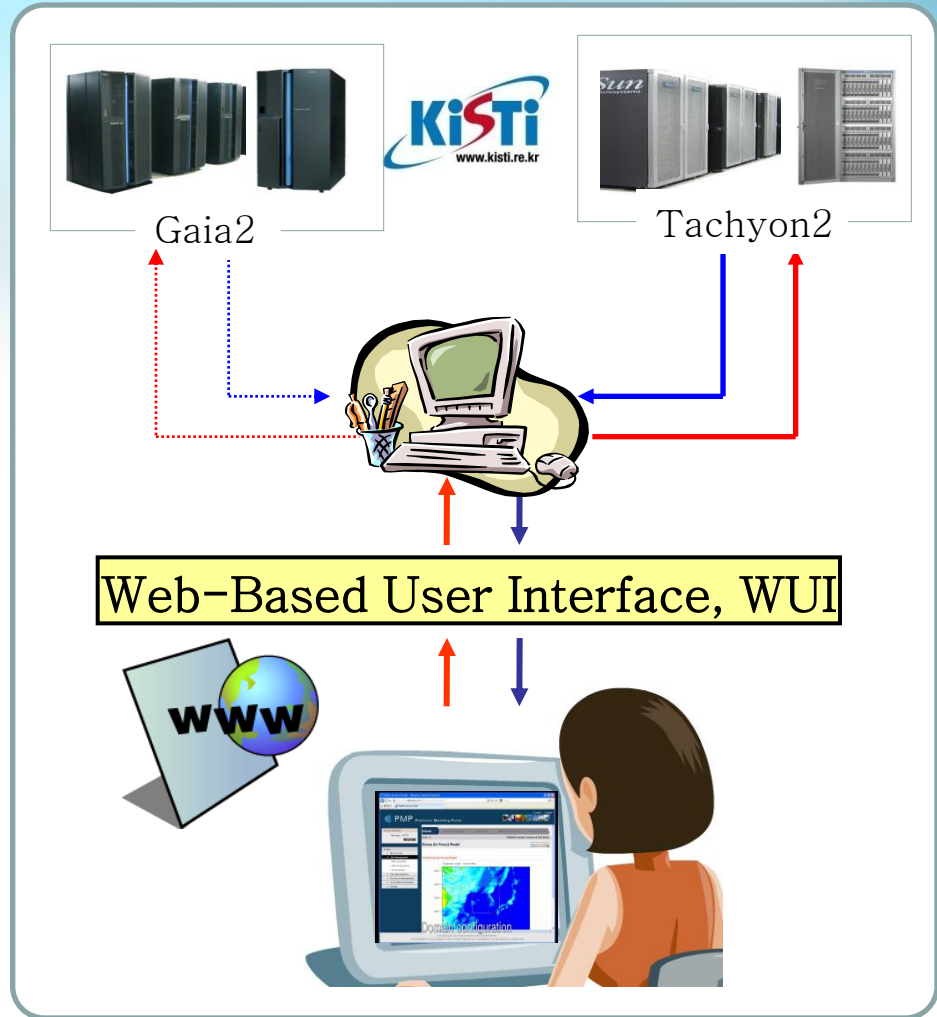
Server environmental setup

Select computing system

Display on Google Earth

Analysis simulation results

Providing Easy Available Environment



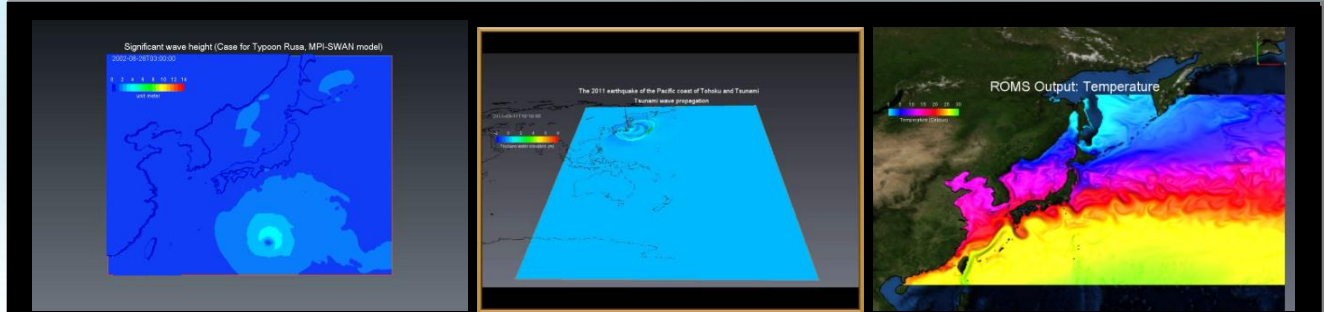


# II.3 Services (3/3)

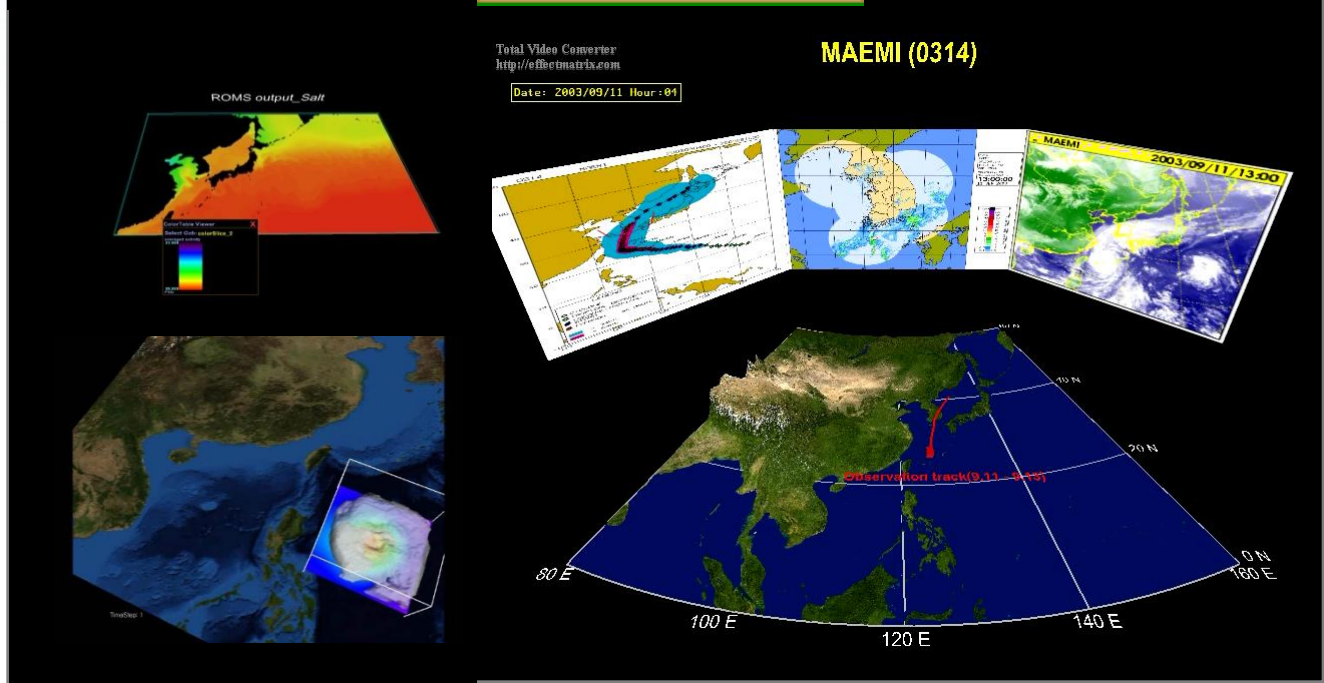
## Visualization

Realistic  
Visual Representation

AvizoGreen



vgeo  
virtual Global explorer and observatory



APOR  
Visualization & Analysis Platform





# III.1 Achievements (1/6)

## Modeling

- ✓ Supporting the Development of the Numerical Model “GRIMs” (Global Regional Integrated Model system)
  - **Improving the Scalability** of MPI code up to **4,000 cores** with YONSEI University.
- ✓ Supporting the Ocean Data Assimilation System using “MOM4” (Modular Ocean Model 4)
  - **Memory Optimization** of MPI code with Korea Institute of Ocean Science & Technology.
- ✓ Developing the High-resolution Regional Ocean Model based on MOM4
  - Optimization up to 36\*43 grids per the partitioned domain using 640 cores
  - Getting ready for much high-resolution domains

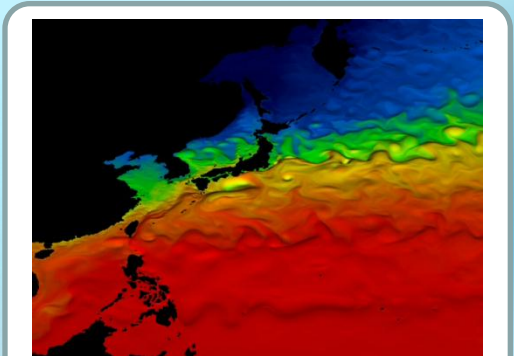
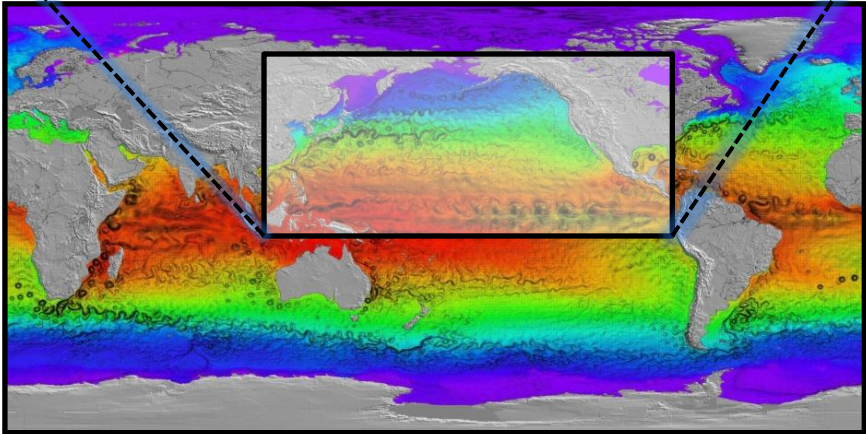
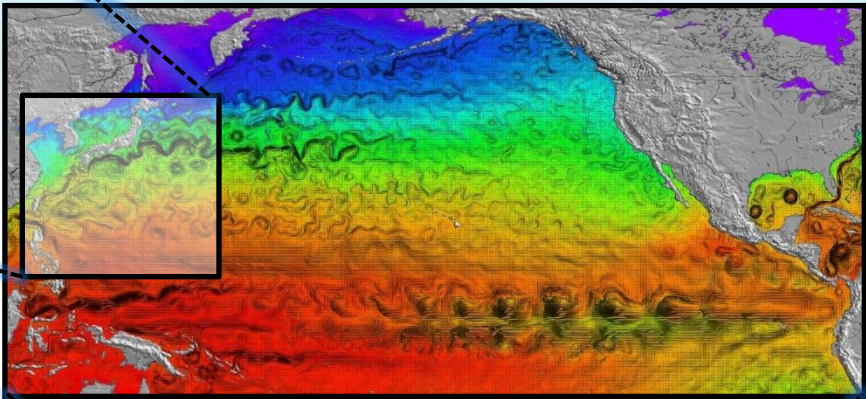
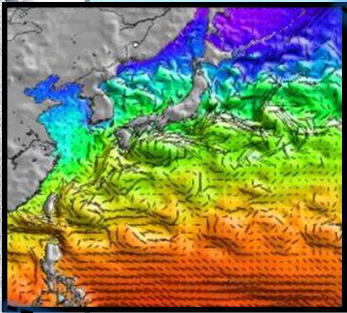






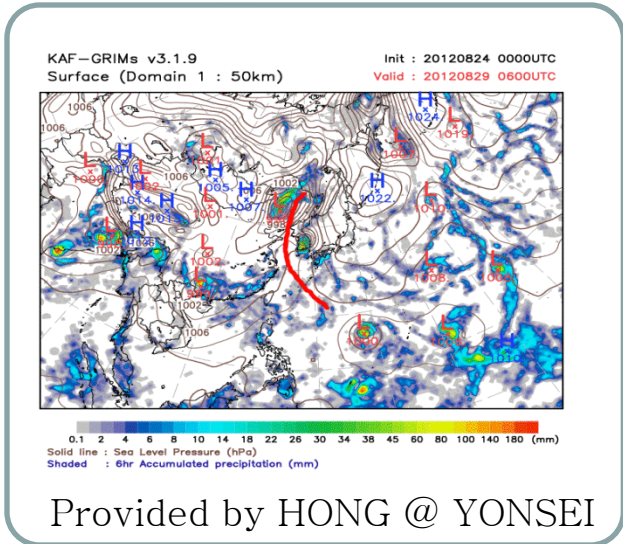
# III.2 Achievements (2/6)

## Modeling



Provided by KIM @ YONSEI

CPU : 200 core  
Memory : 100 GB

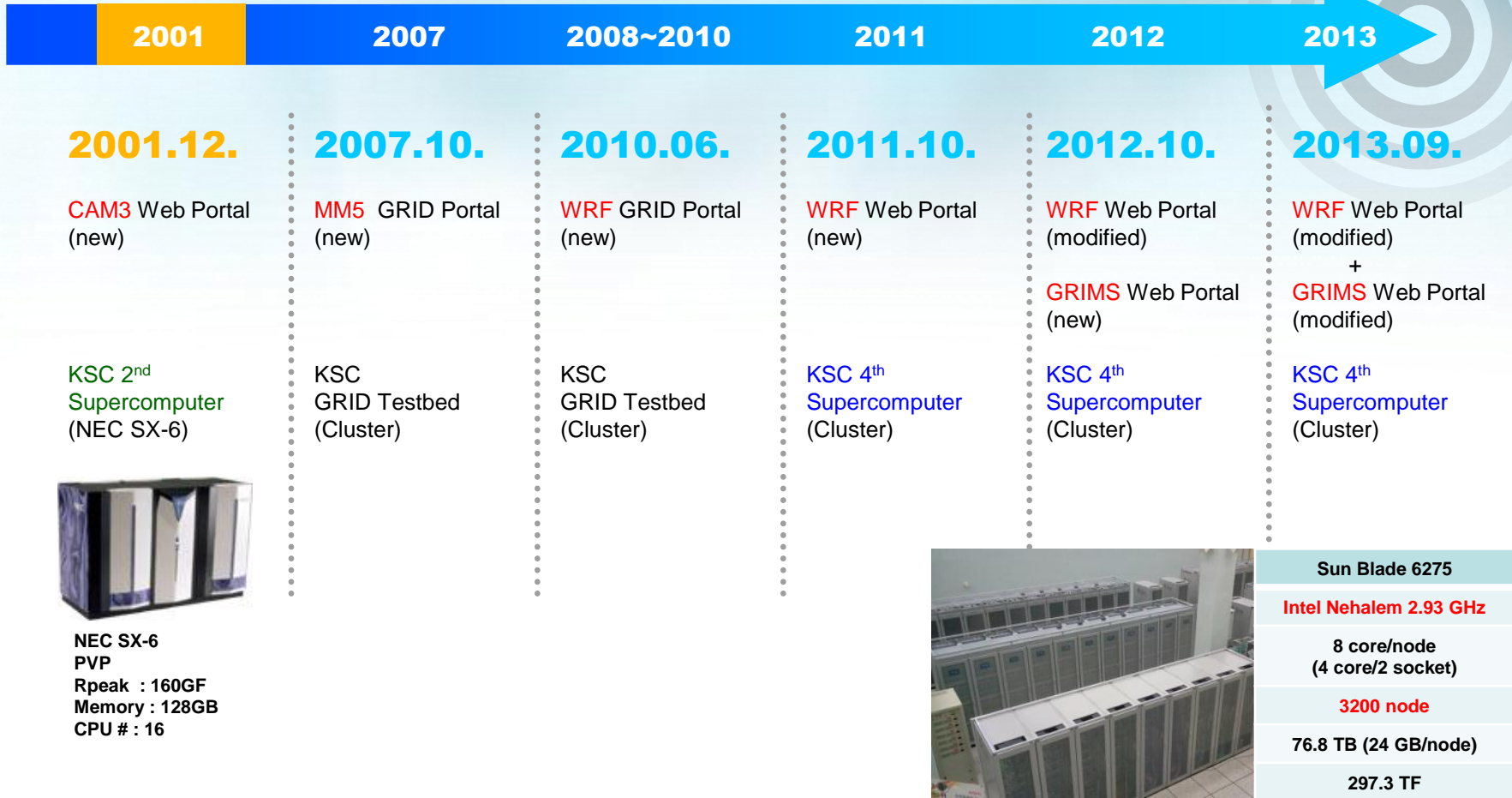




# III.3 Achievements (3/6)

## Simulation

### Design & Implementation of Web/GRID Portals @ KSC



NEC SX-6  
PVP  
Rpeak : 160GF  
Memory : 128GB  
CPU # : 16



|                                  |
|----------------------------------|
| Sun Blade 6275                   |
| Intel Nehalem 2.93 GHz           |
| 8 core/node<br>(4 core/2 socket) |
| 3200 node                        |
| 76.8 TB (24 GB/node)             |
| 297.3 TF                         |





# III.3 Achievements (4/6)

## Simulation



**KSC-WRF** Web-based Portal for Weather Research & Forecasting Model

USER ID:  PASSEWORD:  **LOG IN**

[MEMBER JOIN](#) [FORGOT ID / PASSWORD](#)

For more information  
The Korea Supercomputing Center  
<http://www.ksc.re.kr/eng>  
Weather Research and Forecasting Model  
[www.wrf-model.org](http://www.wrf-model.org)

---

Copyright © 2012. BY POLESTAR. All Rights Reserved.

**KSC-WRF** Web-based Portal for Weather Research & Forecasting Model Welcome!! [logout](#)

**KAF(Korea Air Force) Model** TERRAIN : Domain Selection > KAF Model

**JOB SUBMIT**

- TERRAIN
- PRE-PROCESSING
- NAMelist
- MAIN-PROCESSING
- VISUALIZATION

**JOB MONITORING**

\* Job ID : null

Topography height (meters MSL)



**KSC-GRIMS** Web-based Portal for Global & Regional Integrated Modeling System

USER ID:  PASSEWORD:  **LOG IN**

**01** [NORMAL LOGIN](#) **02** [FORGOT ID / PASSWORD](#) [GO](#)

For more information  
The Korea Supercomputing Center  
<http://www.ksc.re.kr/eng>  
The Global & Regional Intergrated Modeling System  
<http://nmr.lyonsei.ac.kr/grims/introduction.saae>

---

Copyright © 2012. BY POLESTAR. All Rights Reserved.

**KSC-GRIMS** Web-based Portal for Global & Regional Integrated Modeling System Welcome!! web [logout](#)

**JOB SUBMIT** JOB SUBMIT > Postprocess > View Images

**View Images**

Configuration

- Set Jobs
- Define Options

Execution

- Set Variables
- Execute Model
- Postprocess
- View Images

**JOB MONITORING**

- Job Monitoring
- Job List

Variable :  Time :

\* Rain (mm) : Shaded



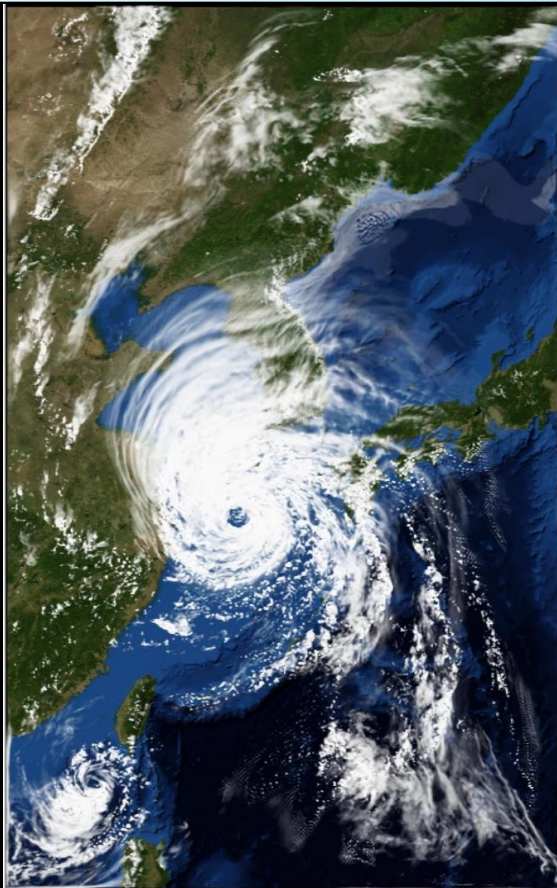
# III.3 Achievements (5/6)



Communication, Ocean, Meteorological Satellite  
(the 7<sup>th</sup> meteorological satellite in the world)

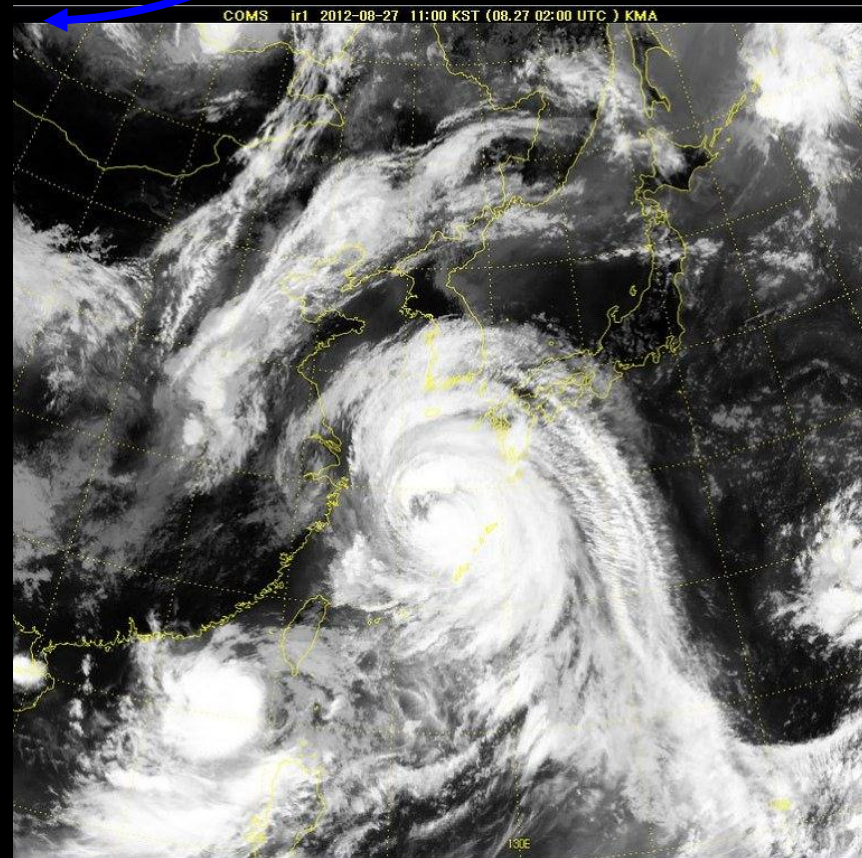
**Visualization**

Realistic  
Visual Representation



**WRF Model Prediction**

(2012-08-27 11:00 KST)



**COMS Observation**

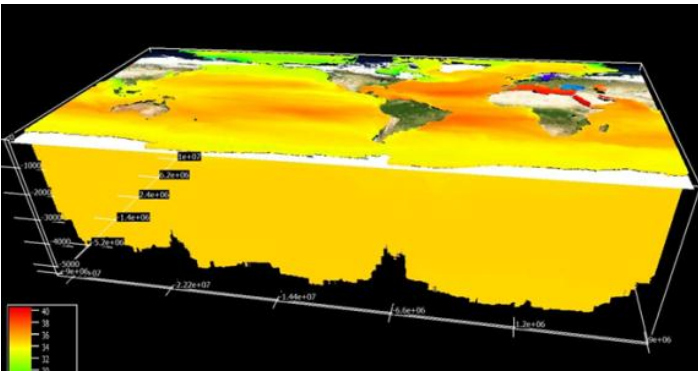
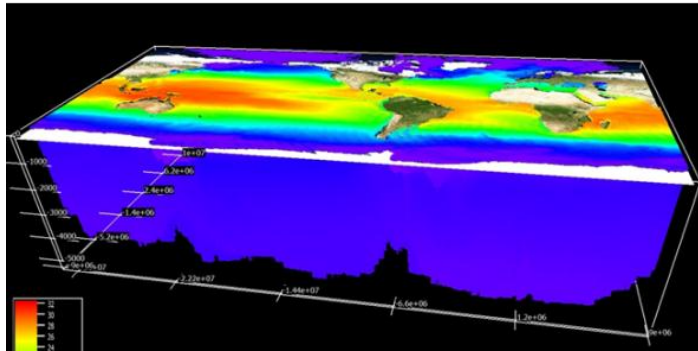
(2012-08-27 11:00 KST)





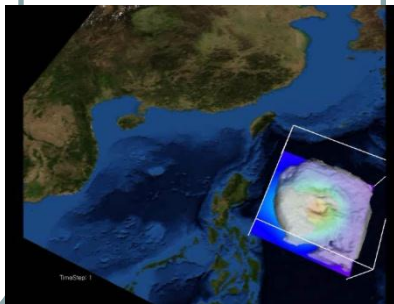
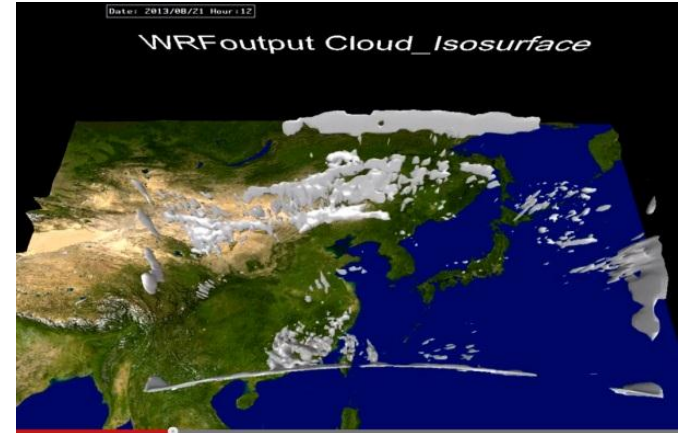
# III.3 Achievements (6/6)

## Ocean



Monthly mean potential temperature (upper) and salinity (bottom) of January visualized by VAPOR2.2.4 (will be released soon)

## Atmosphere



Provided by CHAOS TEAM @ KISTI



# III.4 DMSS (Prototype)



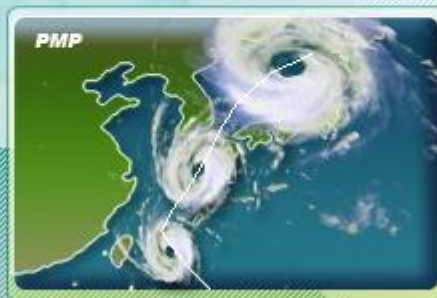
## 태풍-홍수 재해 대응 의사결정지원시스템

Decision Making Support System (Prototype)  
In the preparation of Typhoon-induced flood-disaster



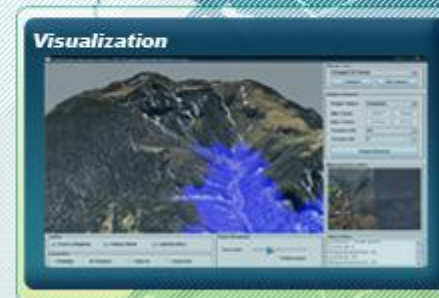
관측자료시스템

Observation  
Data Collecting System



예측모델링시스템

Prediction  
Data Generating System



자료표출시스템

Analysis  
Data Visualization System

Related to the Old Project: (Period) 2007 ~ 2010 (Fund) USD 2.2M for 2.5 year

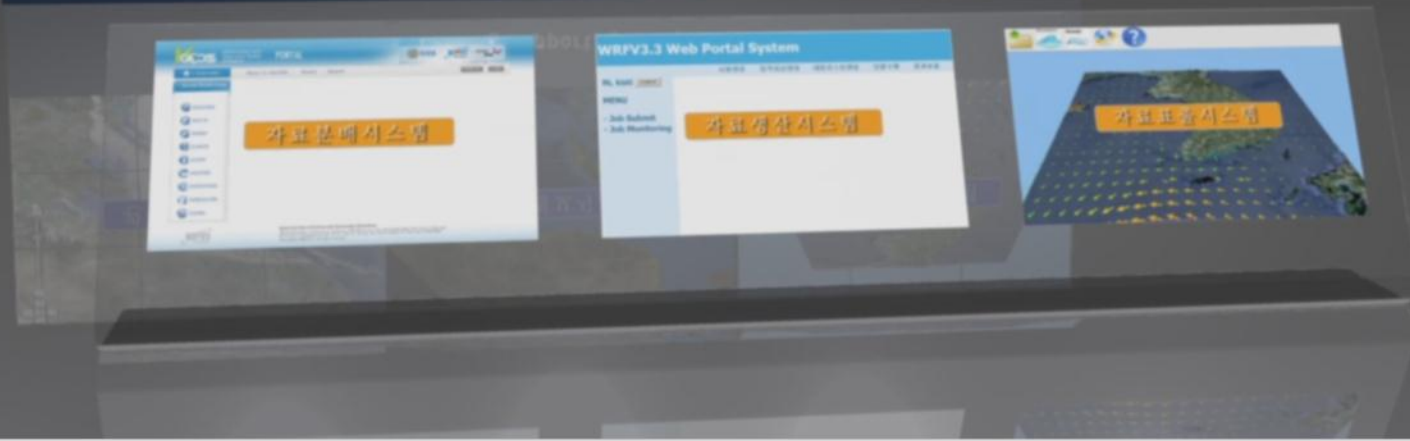


# IV.1 DMSS (Service System)

Engineering Challenge : Design & Deployment



Observation → Prediction → Analysis → Visualization



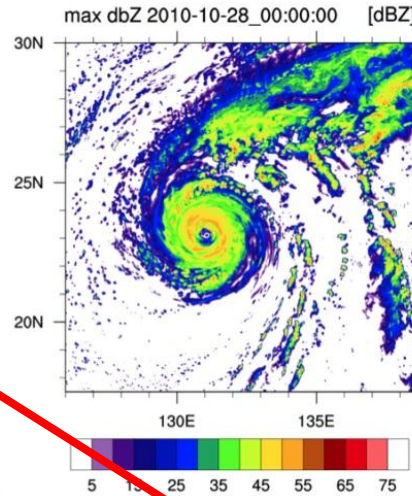
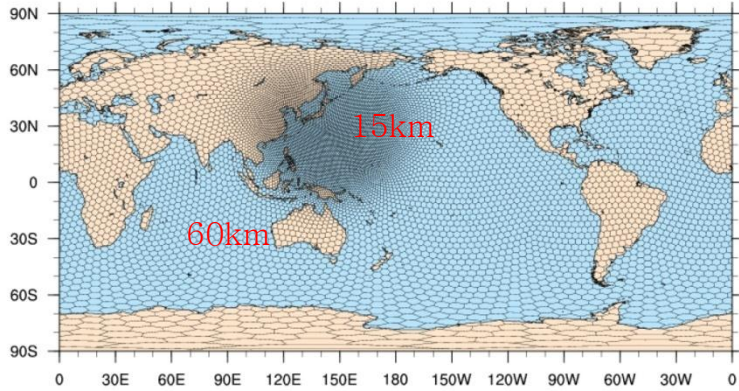
Related to the New Project: (Period) 2014 ~ 2018 (Fund) USD 3M for every year



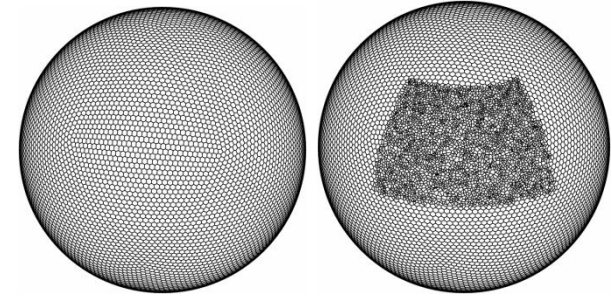


# IV. 2 Fine Resolution Modeling

Scientific Challenge : Accuracy Improvement



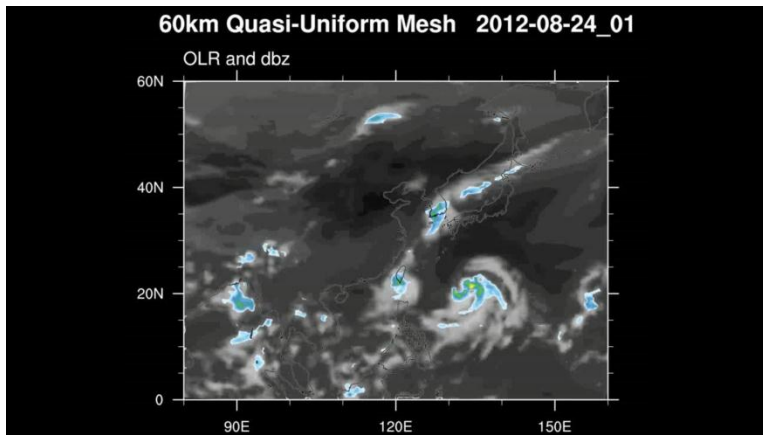
Model Development



Next Generation Weather Prediction Model (MPAS)



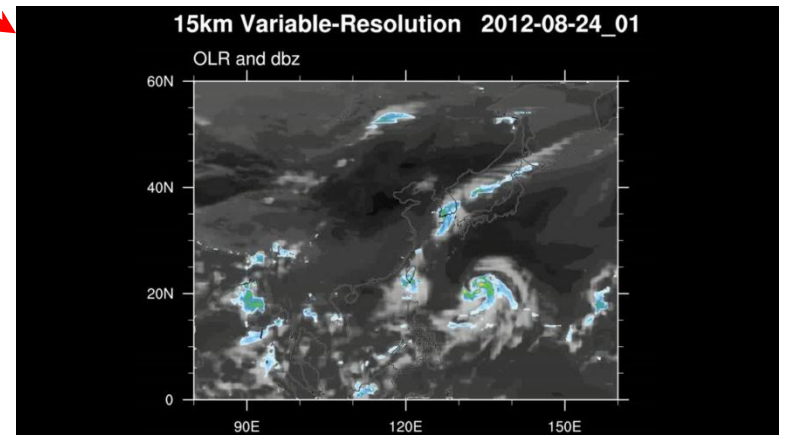
Model Validation



Typhoon Simulation

Bolaven &

TEMBIN

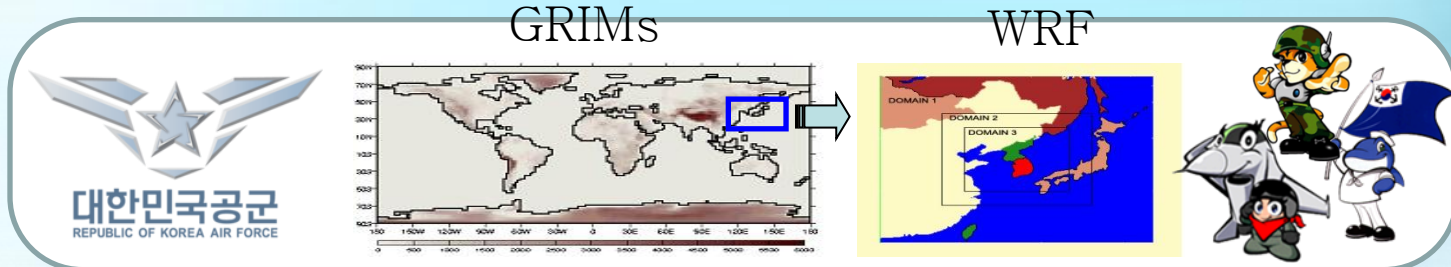


Done by SHPark (NCAR Scientist) using KISTI Supercomputer (August 22, 2013)





# IV.3 Coupling Simulation (Portals)



**KSC-GRIMs2KSC-WRF**

USER ID:

PASSWORD:

**LOG IN**

[FORGOT ID / PASSWORD](#)

For more information  
The Korea Supercomputing Center  
<http://www.nisn.re.kr/eng>  
Weather Research and Forecasting Model  
[www.wrf-model.org](http://www.wrf-model.org)

**KSC-GRIMs2KSC-WRF**

Welcome! kisti [Logout](#)

**Input Data Specification**

Input Data:  FNL  QFS-BST  QFS\_FCST  GRIMs\_OUTPUT

Time Control

Start Date (YYYY-MM-DD-HH): Year:  Mon:  Day:  Hour:

Forecast Time length (unit: Day):

**Submit**

**KSC-GRIMs2KSC-WRF**

Welcome! kisti [Logout](#)

**Visualization**

Domain 1

X-Y:  Sfc:  **Download**

Met: 2013-08-21\_06:00:00  
WRF: 2013-08-21\_06:00:00

Total Precipitation (mm)  
Sea Level Pressure (hPa)

45°N  
40°N  
35°N  
30°N  
25°N

120°E  
115°E  
110°E  
105°E  
100°E  
95°E  
90°E  
85°E  
80°E  
75°E  
70°E  
65°E  
60°E  
55°E  
50°E  
45°E  
40°E  
35°E  
30°E  
25°E  
20°E  
15°E  
10°E  
5°E  
0°  
5°W  
10°W  
15°W  
20°W  
25°W  
30°W  
35°W  
40°W  
45°W  
50°W  
55°W  
60°W  
65°W  
70°W  
75°W  
80°W  
85°W  
90°W  
95°W  
100°W  
105°W  
110°W  
115°W  
120°W

**JOB SUBMIT**

TERRAIN

PRE-PROCESSING

NAMelist

MAIN-PROCESSING

VISUALIZATION

**JOB MONITORING**

JOB LIST

**KSC-GRIMs2KSC-WRF**

Welcome! kisti [Logout](#)

**Set Jobs**

CONFIGURATION

SET JOBS

DEFINE OPTIONS

EXECUTION

SET VARIABLES

EXECUTE MODEL

POSTPROCESS

VIEW IMAGES

**JOB MONITORING**

JOB LIST

Job ID:

Job Name:

Number of core:

CPU time limit:

**Submit**

Coupling of  
KSC-GRIMs & KSC-WRF portal  
→ WRF can use GRIMs Output directly



# IV.4 Realistic Visualization



Ocean 1



Ocean 2



Flying Mode



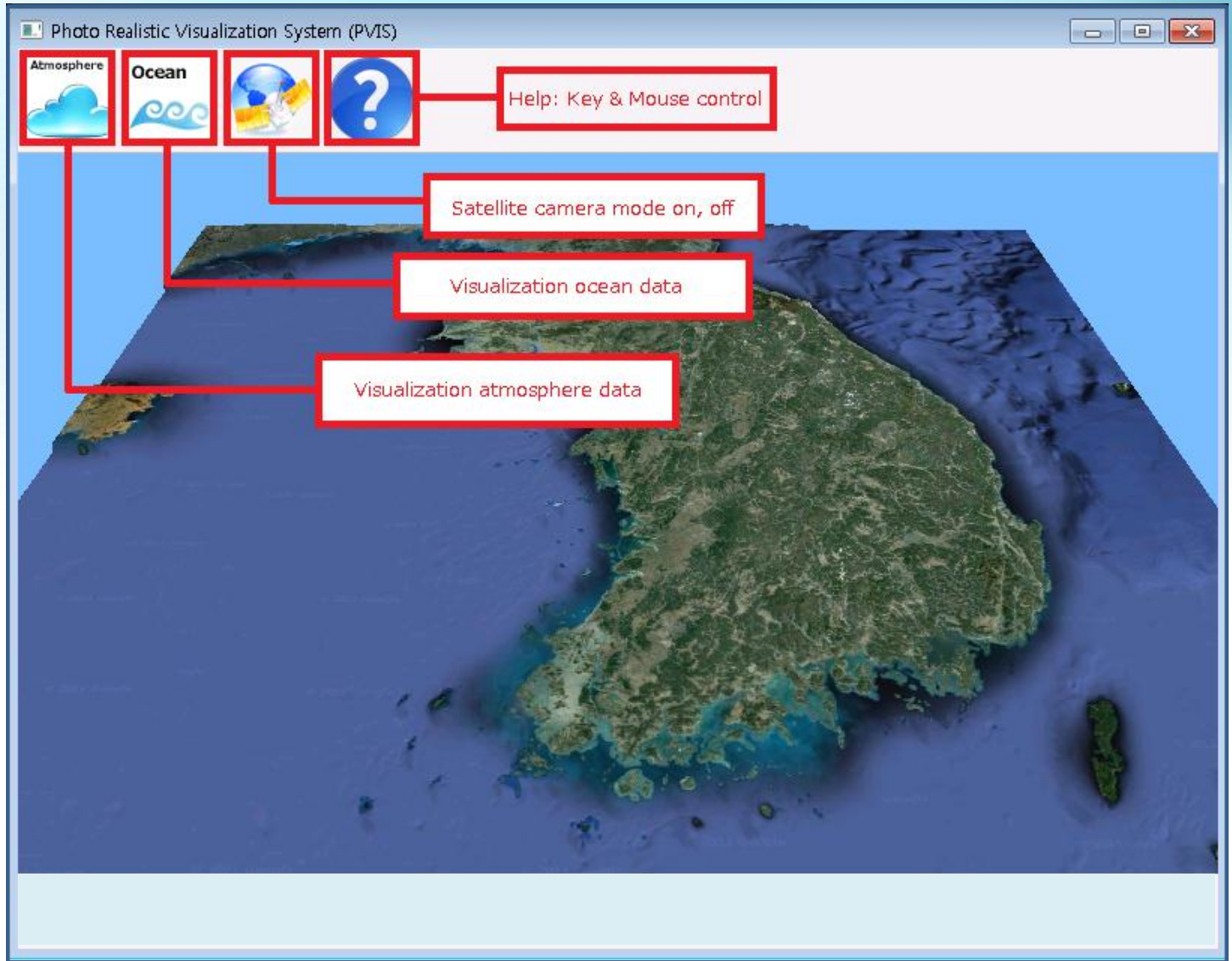
Satellite Mode



Flying

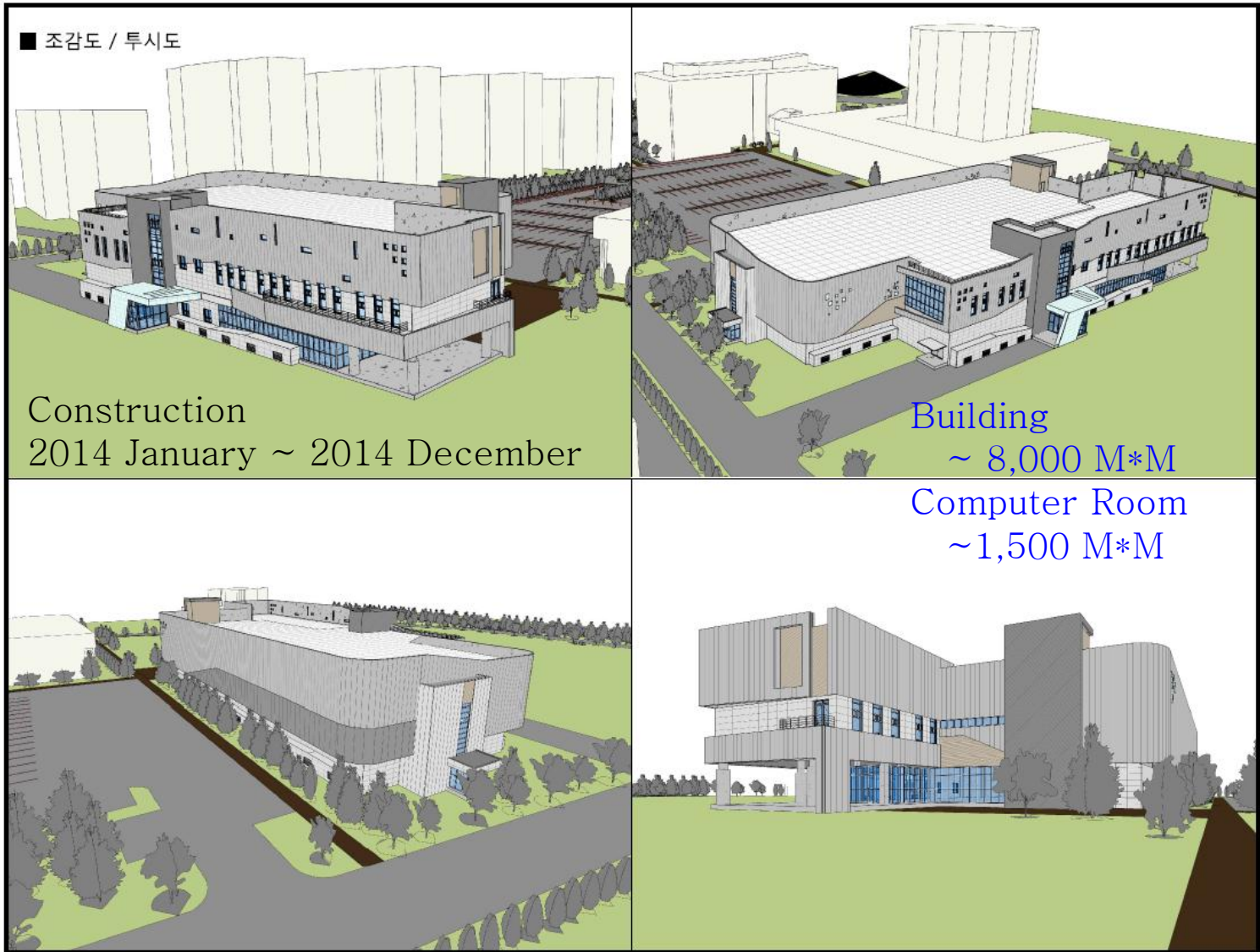


Flood





# KISTI New Computer Building





*Thank You !*

■ <http://chaos.ksc.re.kr>

